

BUILDING DIGNITY

The HAVEN Capital Campaign

A ONCE-IN-A-
GENERATION
OPPORTUNITY

HAVEN

ENDING VIOLENCE.
CHANGING LIVES.

BE BRAVE.

Kathy Beebe,
Director of HAVEN
NH and NH State
Senator and
HAVEN Honorary
Campaign Chair
Martha Fuller Clark



HONORARY CHAIR STATEMENT

As Honorary Chair, I am honored to stand alongside courageous survivors, advocates, educators, and counselors in the shared effort to end sexual and domestic violence in our communities.

Our community's compassion and philanthropy drive the Building Dignity campaign and that's why I'm reaching out to ask for your support today.

I invite you to join me in investing in the future of HAVEN. Your support not only sustains a vital organization—it helps build stronger, safer Seacoast communities and contributes to a world free from fear and violence.

Since HAVEN's formation through the merger of two dedicated local organizations in 2015, I have witnessed its remarkable growth into a statewide leader. Today, HAVEN meets the urgent needs of survivors while also redefining how we prevent violence before it begins. This is not just about intervention—it's about transformation. HAVEN is creating a new paradigm that empowers future generations to live with safety, dignity, and hope.

Your support makes this vision possible. Together, we can ensure that HAVEN continues to lead, innovate, and protect—now and for years to come.

The new facility will serve as a welcoming community hub, bringing together HAVEN's programs, staff, volunteers, emergency shelter, and transitional housing—all under one roof. It will be a deeply intentional, accessible space that empowers survivors and their families to live free from abuse. With your partnership, HAVEN can expand its reach and deepen its impact—building a community that is empowered, educated, and equipped to break the cycle of violence.

Our communities are safer when we can provide the prevention, refuge, education, and outreach that HAVEN offers 24 hours a day.

Join me in building HAVEN's permanent home for safety, dignity, and hope.

With gratitude and determination,



Martha Fuller Clark, Honorary Chair

INTRODUCING THE **BUILDING DIGNITY CAMPAIGN**

After years of working from cramped and hidden locations, right now HAVEN has a once-in-a-generation opportunity to build a permanent, first-of-its-kind facility to bring HAVEN's core services and shelter under one roof. HAVEN will expand and improve their traditional shelter and housing with a new, best-practices model, and allow them to grow to meet the huge demand across Southeastern New Hampshire with locations in Portsmouth and a walk-in office in Rochester.

The Building Dignity Campaign will raise funds so that HAVEN can build a safe and secure facility on the site of Christ Episcopal Church on Route 1 in Portsmouth in a unique partnership with other respected community organizations—the Portsmouth Housing Authority and the Episcopal Diocese of NH.

This campaign represents more than construction—it's an invitation to dismantle cycles of violence by providing dignity-centered care that meets survivors' needs today and will reduce the number of victims tomorrow.

H:VEN

ENDING VIOLENCE.
CHANGING LIVES.





THE URBAN FORESTRY CENTER

TRAIL CONNECTOR

WETLAND SETBACK

7 TRANSITIONAL HOUSING UNITS

H:VEN OFFICES

EXISTING PLAYGROUND

POTENTIAL PLAYGROUND

MEMORIAL GARDEN

APARTMENT BUILDING SECTION 1

APARTMENT BUILDING SECTION 2

CEMETERY

EXISTING BUILDING

BUS STOP

PROPERTY BOUNDARY

SETBACK BOUNDARY

ROUTE 1 (LAFAYETTE ROAD)

MCDONALD'S

PORTSMOUTH USED CAR CENTER

A ONCE-IN-A-GENERATION OPPORTUNITY

HAVEN is very excited to share a unique opportunity with the Portsmouth Housing Authority and the Episcopal Diocese of New Hampshire to construct a community-focused campus at 1035 Lafayette Road (Route 1) in Portsmouth. Breaking ground in Spring 2026, we will create a visible symbol of safety and collaboration for the Seacoast:

- Three floors of centralized, visible, and accessible office and program space
- Seven new family units for emergency and transitional housing
- Expanded prevention education and survivor services
- 44 affordable workforce apartments for Portsmouth Housing Authority
- Renovated childcare area (tenant to be named)
- Community gathering space in Christ Episcopal Church parish





“My first interaction with HAVEN was at the Emergency Room at Wentworth Douglass Hospital. I remember being told the investigation would go to the FBI because I was sexually assaulted, raped and trafficked. I remember the out of body experience. I remember that HAVEN was there in that moment.”

-Lissa Curtis, Founder and Director of Safe Haven Ballet

EVERY SINGLE DAY

Every day in Southeastern New Hampshire, people quietly endure the fear of domestic and sexual violence. These are not strangers, they are our friends, neighbors, and colleagues, often hiding their struggles behind brave faces.

Domestic violence means home is not a place of comfort, but a source of uncertainty and distress. Surviving can mean walking away from home, friends, belongings, neighborhoods, and financial security.

In addition to the need for medical and legal support, sexual assault survivors experience emotional, psychological, and physical challenges in seeking safety, validation, and autonomy.

OVER
1 IN 3 WOMEN (35.6%)
1 IN 4 MEN (28.5%)

IN THE US HAVE EXPERIENCED RAPE, PHYSICAL VIOLENCE, AND/OR STALKING BY AN INTIMATE PARTNER IN THEIR LIFETIME.

**EVERY
68 SECONDS**

AN AMERICAN IS SEXUALLY ASSAULTED. AND **EVERY 9 MINUTES**, THAT VICTIM IS A CHILD.

3.3 MILLION

CHILDREN ANNUALLY ARE **DIRECTLY EXPOSED TO VIOLENCE** AGAINST THEIR CAREGIVER



“I grew up in a home riddled with violence and abuse and we relied heavily on organizations like HAVEN. I was too young to fully understand everything that was happening, but old enough to know we were running for our lives.”

-Diannely Antigua, Former Portsmouth Poet Laureate

WHY WE ALL NEED HAVEN

When victims find the courage to seek help, HAVEN answers the call—24/7/365. As New Hampshire’s largest and most comprehensive domestic and sexual violence support agency, HAVEN has been the bedrock of crisis intervention and prevention for over 45 years.

HAVEN is the region’s ONLY hub offering the full range of resources survivors need to heal and rebuild—emergency shelter, housing, medical and social services, and legal and financial support—helping reclaim lives one family at a time.

To break the cycle of violence, HAVEN’s Prevention Education programs empower young people in classrooms to use their voices to stop future sexual, domestic, and dating violence.

48

NEW HAMPSHIRE
TOWNS RELY ON HAVEN
KEEPING SURVIVORS SAFE

50 PERCENT

OF CHILDREN SERVED BY
EMERGENCY SHELTERS ARE
UNDER 6 YEARS OLD

HAVEN BY THE NUMBERS

IN THE PAST YEAR, HAVEN PROVIDED CRITICAL SUPPORT TO THOUSANDS OF PEOPLE.

2,570

HOTLINE CALLS ANSWERED

13,500

STUDENT AND TEACHER ENGAGEMENTS

52

EMERGENCY ROOM ACCOMPANIMENTS

76

COURTROOM ACCOMPANIMENTS

188

CHILD ADVOCACY CENTER ACCOMPANIMENTS

3,100

SAFE NIGHTS OF SHELTER

\$26,352

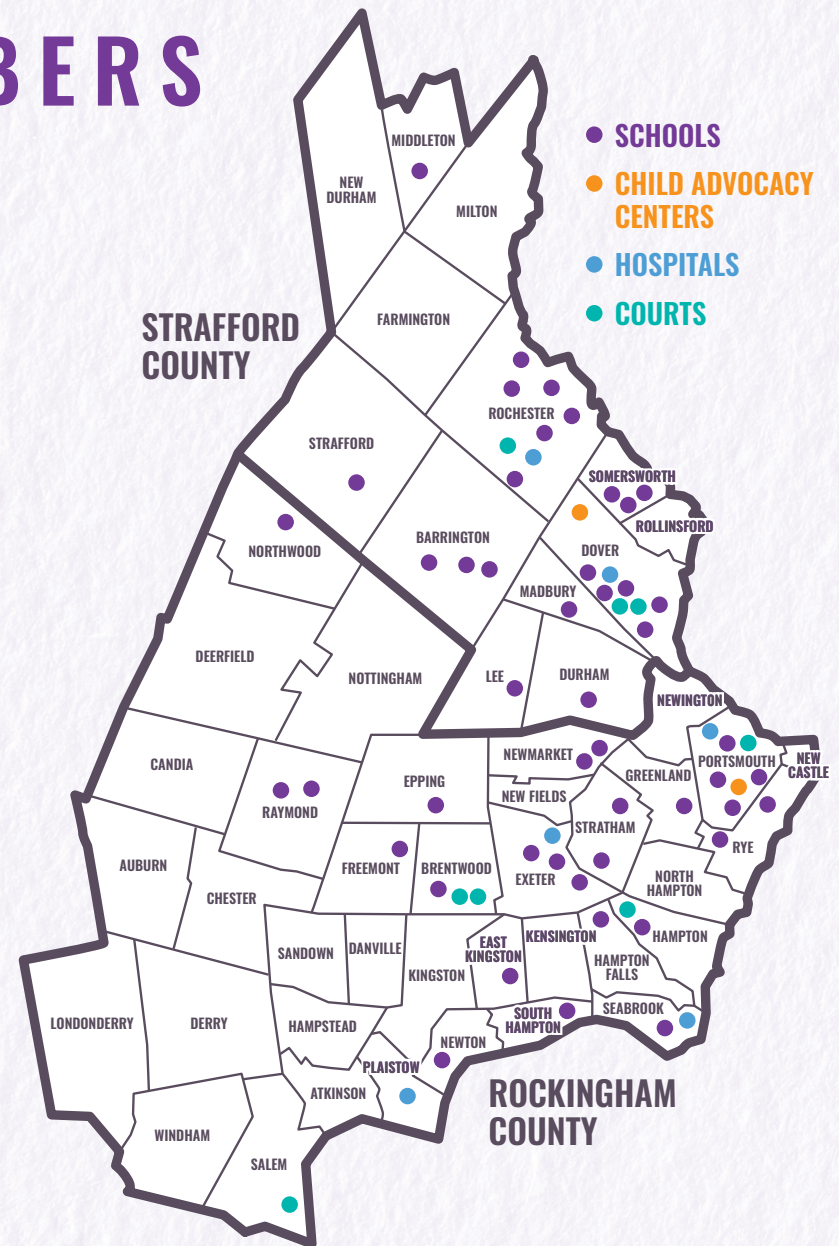
DISTRIBUTED FOR HOUSING FLEXIBLE FUNDING

6,485

VOLUNTEER HOURS GIVEN

40

PEOPLE SUPPORTED THROUGH GROUP SERVICES



Every dot on this map represents a place where HAVEN staff meet survivors with hope.

HOW WE WORK

EDUCATING FOR VIOLENCE PREVENTION

HAVEN's Prevention Education team travels throughout the school year to meet students and help them learn age appropriate tools that help keep them safe and know they're supported if they need help.

SERVING CLIENTS


HAVEN's Client Services program includes a 24-hour crisis and support hotline, information and referral services; access to mental health and legal services, staff accompaniment and support with navigating police stations, hospital emergency rooms, courts and local child advocacy centers; and support groups.

PROVIDING SHELTER & HOUSING SUPPORT

Our short-term emergency shelter helps to provide individuals and their children with a safe and supportive environment to heal from abuse and to rebuild their lives, while our housing programs help survivors and their families establish stability and overcome barriers to finding new homes.

ENGAGING THE COMMUNITY

The goal of community engagement is to highlight HAVEN's programs and services and to increase awareness. Our team serves as the bridge to connect community members with the support they need from our HAVEN staff.



“My sister, mom, and I shared a bed in the shelter when I was 3. My mom has always been a rock for me and I’m so grateful that HAVEN was her rock when she needed it.”

-Brenton Ciccotelli,
HAVEN Volunteer
Advocate

BUT THE DEMAND IS TOO GREAT

HAVEN's shelters were never designed for families escaping domestic violence. Every night, families are turned away because there aren't enough beds. Everyday tasks like cooking, bathing children, and even having privacy to speak with staff are all a struggle. Hidden shelter locations are no longer safe in the digital age.

HAVEN's Prevention Education team cannot meet the rising needs in classrooms and dozens of schools sit on long waitlists for these popular and powerful programs.

Last year, HAVEN volunteers answered thousands of hotline calls, but there are people in our region who don't even know HAVEN is here for them.

**OVER
30 PERCENT**
OF NEW HAMPSHIRE
RESIDENTS LIVE IN
HAVEN'S COVERAGE AREA

13,500
STUDENTS AND TEACHERS CAN
ACCESS HAVEN PREVENTION
EDUCATION EACH YEAR,
A FRACTION OF THE DEMAND

2,570
HOTLINE CALLS ANSWERED
BY HAVEN VOLUNTEERS AND
STAFF LAST YEAR

A PERMANENT HOME DESIGNED TO WELCOME COMMUNITY AND RESPECT SURVIVORS

Building Dignity is the best practice industry model and means designing with intention: outward-facing community spaces that welcome partners and donors sit alongside confidential service areas that protect survivor privacy. HAVEN's new **17,000 sq. ft, three-floor facility is designed to meet survivors at every step of that journey, with dignity, privacy, and compassion** at its core. This project will unfold in two phases reflecting a sound financial strategy that considers the current funding environment.

PHASE 1

- **Prioritizes the purchase and build out of the shelter and the main offices**, so that HAVEN can vacate costly rental spaces by Summer 2027.
- Creates 7,000 safe nights for individuals and families in crisis, double the current capacity.
- Takes advantage of the timely partnership opportunity with Portsmouth Housing and the Episcopal Diocese to build a shared site on Route 1 in Portsmouth.
- Expands prevention-education programs to reach more schools across the region.

PHASE 2

Completes the transformation of the existing building (former church) by building out the second floor, renovating interior offices and meeting rooms, and executing exterior upgrades.

MAIN FLOOR

Here, the Building Dignity model respects survivors by meeting their goals for self-determination, security, and connection. HAVEN's new home will create welcoming environments that empower survivors and their children and free staff up to focus on advocacy and support.

SURVIVOR AND STAFF PRIVACY

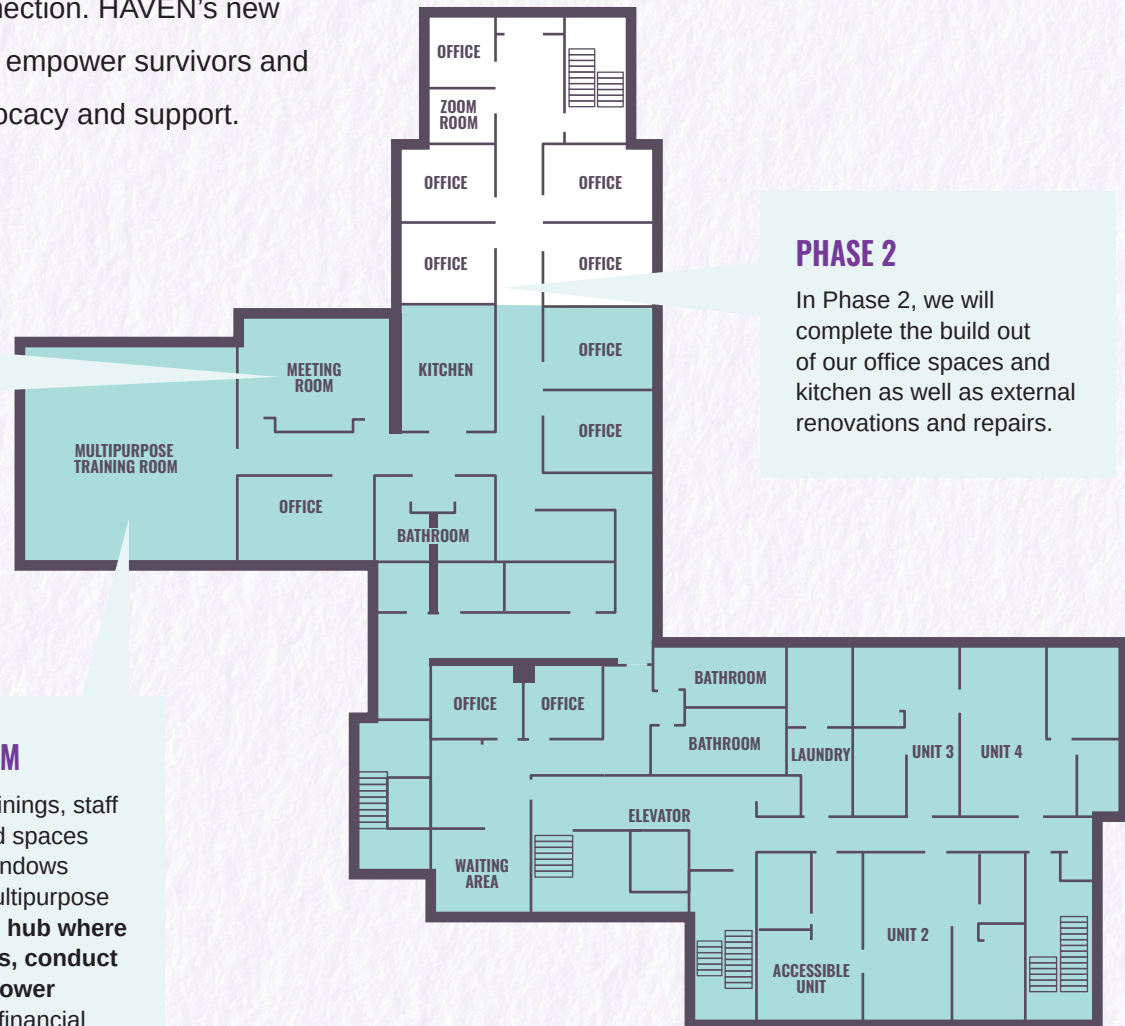
Survivors will have **dedicated private meeting rooms** for crisis counseling, legal preparation, and therapy, and volunteers have private spaces for crisis hotline calls which currently is not available to HAVEN's survivors.

MULTIPURPOSE TRAINING ROOM

Today, HAVEN holds volunteer trainings, staff meetings, and classes in borrowed spaces across the entire region with no windows and poor connectivity. Our new multipurpose training room will be a **welcoming hub where we can host community partners, conduct professional trainings, and empower survivors** with practical skills like financial literacy—all under one roof.

PHASE 2

In Phase 2, we will complete the build out of our office spaces and kitchen as well as external renovations and repairs.



SECOND FLOOR

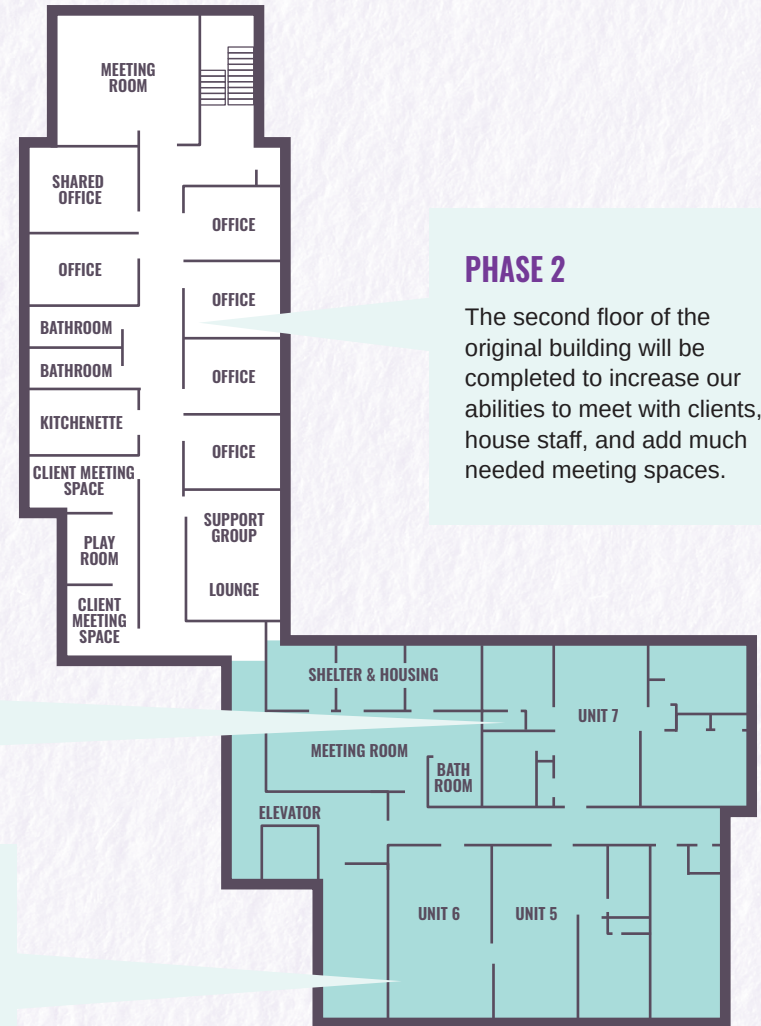
Here, Building Dignity looks like studio apartments nearby community spaces and meeting rooms adjacent to playrooms, so survivors **can have both privacy and support of the entire community** that is HAVEN.

STUDIO-STYLE APARTMENTS WITH COMMUNITY SPACES

New shelter units **embody the Building Dignity model**: spacious studios with private bathrooms and kitchenettes so families stay together while in transition. This **honors the resilience of parents and children** by providing both the privacy they need and the community connection that heals.

PLAY SPACES DOUBLE AS MEETING SPACES

Staff can meet with clients while their children play. This **dignified solution removes the trauma of separation** during crisis moments, transforming support from fragmented to whole family centered.



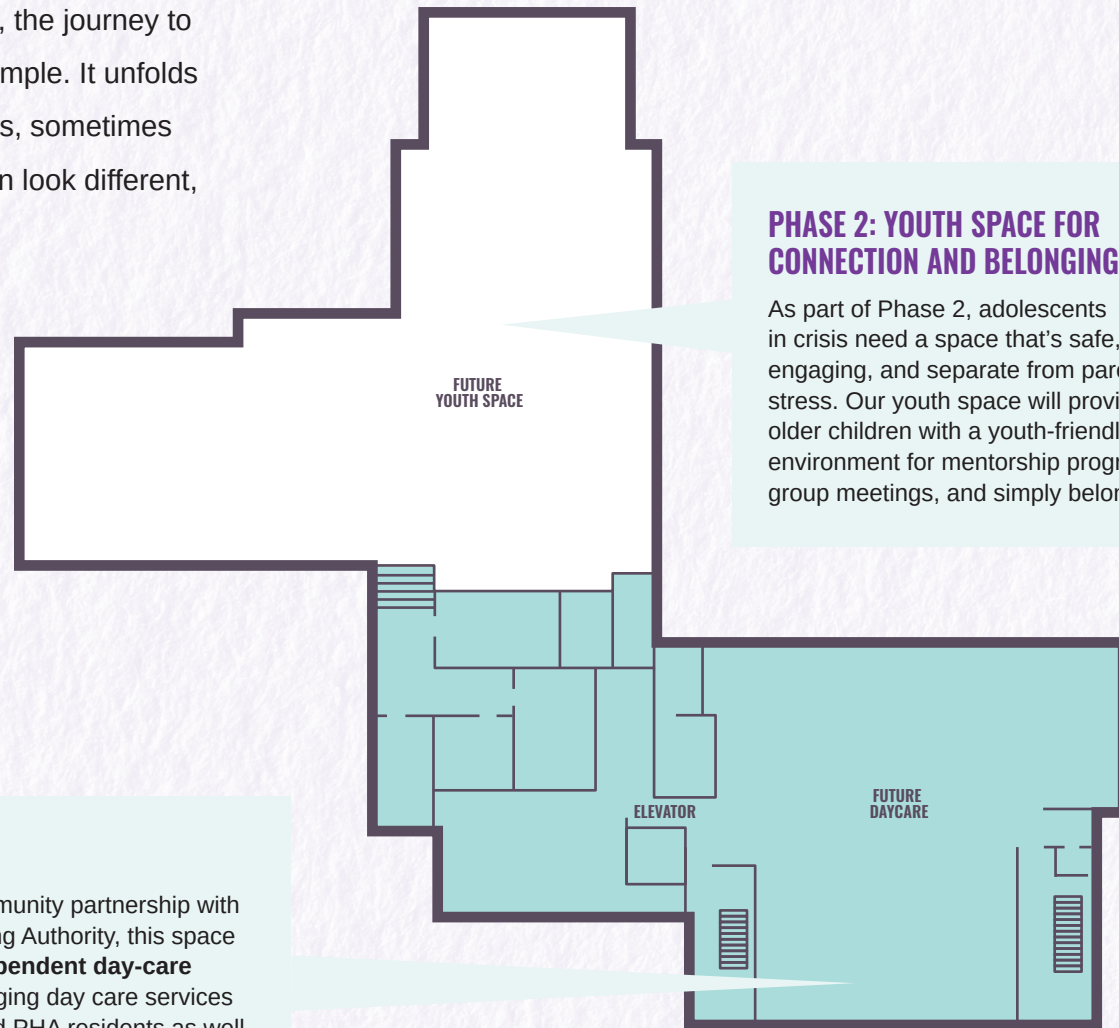
PHASE 2

The second floor of the original building will be completed to increase our abilities to meet with clients, house staff, and add much needed meeting spaces.

PHASE 1 PHASE 2

LOWER LEVEL

Building Dignity recognizes that for survivors of domestic violence and sexual assault, the journey to safety and healing is rarely short or simple. It unfolds over time—sometimes days or months, sometimes years. Creating spaces for healing can look different, depending on the survivor.



PHASE 2: YOUTH SPACE FOR CONNECTION AND BELONGING

As part of Phase 2, adolescents in crisis need a space that's safe, engaging, and separate from parental stress. Our youth space will provide older children with a youth-friendly environment for mentorship programs, group meetings, and simply belonging.

DAY CARE

As part of the community partnership with Portsmouth Housing Authority, this space will house an **independent day-care organization**, bringing day care services to both HAVEN and PHA residents as well as the greater community.

■ PHASE 1 □ PHASE 2



H:VEN
ENDING VIOLENCE.
CHANGING LIVES.

“Without HAVEN’s education programs about personal body safety and talking to trusted grownups, there would be lots of local children suffering in silence. We make it possible for kids to reach out for help, while they’re still kids.

-Erica Skoglund,
Education Director

HAVEN IS BREAKING THE CYCLE OF VIOLENCE

HAVEN's award-winning prevention programs are changing futures, teaching safety before violence begins. Decades of research shows that only through educating young people can generations possibly stop domestic and sexual violence before it happens.

- Many parents' first introduction to HAVEN happens when their children meet HAVEN's team of educators and puppeteers who visit K-12 classrooms. The nationally recognized team brings age-appropriate lessons including Personal Body Safety Rules, listening to instincts, and seeking help from trusted adults if they ever feel hurt, confused, or scared.
- Camp Hope, HAVEN's summer program, and Pathways Mentorship, their year-round program, both offer therapeutic and long-term impact supports to children who have experienced domestic or sexual violence.

TODAY

HAVEN's Prevention Education team reached **13,500 students and teachers** last year and **74 family members** through Pathways and Camp Hope.



TOMORROW

By growing HAVEN with a second team of educators, HAVEN hopes to reach over **20,000 students** annually in classrooms, camps, and group mentoring.



“Building HAVEN’s new home means we can finally give survivors all the dignity and support they deserve while we help them to rebuild their lives.”

-Laura Sepe, Shelter Manager

A SHELTER DESIGNED WITH DIGNITY IN MIND

The Building Dignity movement ensures domestic violence survivors have safety, choice, and community connection. HAVEN is at the forefront of this work in the Northeast. The new design will offer welcoming, accessible spaces that empower survivors and their children. Your support builds a visible, dignified space that replaces fear with hope.

- A larger shelter that doubles the emergency and transitional unit capacity for our families and individuals.
- A public presence that moves HAVEN from “in the shadows” to be proudly, highly visible on Route 1 in the center of the region, empowering clients with an intentional design conducive to secure but visible connection with the community.
- Thoughtfully planned residential spaces where families and children can replace fear with hope.

TODAY

HAVEN’s current shelter can only serve **the most urgent needs**, not nearly fulfilling all the inquiries they receive. Those who are served stay in a cramped, tired, rented building with just **4 units**.



TOMORROW

A 100% increase, family units with double the capacity and a beautiful dignified design for families and individuals that provides both community support and privacy and over **7,000 safe nights of shelter** each year.

PROJECT BUDGET

Phase 1 focuses on constructing the new addition and delivering essential program space. It establishes the core building infrastructure, vertical circulation, partial build out of office space and seven transitional housing units to support immediate housing and program needs. A shell daycare space will be created in the basement, allowing the project to onboard a partner tenant quickly while deferring interior fit-out to the prospective tenant. By limiting exterior work and major renovations to the existing building, Phase 1 reduces the upfront cost, and faster path to occupancy.

Construction Hard Costs	\$4,650,000
<ul style="list-style-type: none">• Buildout of HAVEN lobby and office spaces on 1st floor• Buildout of transitional housing, basement daycare space, structural supports	
<hr/>	
Share (1/3) of overall Site Costs	\$920,000
<hr/>	
Soft Costs	\$1,805,000
<ul style="list-style-type: none">• Architectural costs• Consultants – Legal, Owners Reps• Testing and Inspection, Utilities, Permits, Other• FF&E for transitional housing and offices	
<hr/>	
Owner and Design Contingencies	\$625,000
<hr/>	
Phase 1 Total	\$8,000,000

Phase 2 of development will include a buildout of 2nd floor, buildout of HAVEN offices, and program space, and significant exterior upgrades. Target date for completion of Phase 2 is September 2029.

THANKS TO OUR DONORS

“I am pleased to support the Campaign for HAVEN, whose 45-year record meets urgent needs and will now unite programs on one campus.”

-Linda Cohen,
Kittery, Maine

“Impax is a proud supporter of HAVEN’s Building Dignity Campaign because it will strengthen NH communities – protecting neighbors, preventing violence, and creating a more compassionate society.”

-Ed Farrington,
President of North America,
Impax Asset Management

“HAVEN helps survivors reclaim their lives. We are grateful to be a small part of that journey by supporting the Building Dignity Capital Campaign.”

-Sue and Randy Brown,
Sandown, NH

MAKE A GIFT

Every gift builds dignity. Whether you choose to make a one-time gift or a multi-year pledge via check, online, through a donor-advised fund, a gift of securities (such as stock), or an IRA distribution, your generosity will help create a permanent home for safety, empowerment, and hope.

Contact Alexandra Horne, Campaign Manager at alexandra@havennh.org to learn more about making a gift and donor naming opportunities.



**MAKE A GIFT TODAY
AND KEEP UP TO DATE
ON THE CAMPAIGN**

HAVEN'S BUILDING DIGNITY CAPITAL CAMPAIGN LEADERSHIP

CAMPAIGN STEERING COMMITTEE

Hon. Martha Fuller Clark,
Honorary Chair

Lauren Atwood,
Elizabeth Bauman

Jayne Begala

Mary Jo Brown

Jenifer Cannon

Andi Creeley

Andrea Daly

Kristina Goumas

Deb Iwanicki

Sandra Jalbert

Aaron Jenkyn

Vanessa McElroy

Jennifer Meconi

Lara Prescott

Amy Sterndale

Lori Waltz

Sarah Welch

Margaret Witherspoon

CAMPAIGN LEADERSHIP STAFF

Kathy Beebe,
Executive Director

Alexandra Horne,
Campaign Manager

Nora Happny McMorran,
*Volunteer and
Marketing Manager*

Suzanne Scharff,
*Development and
Events Manager*

BOARD OF DIRECTORS

Mary Clark

Kristina Goumas

Marc Ouellette

Jesse Antosiewicz

Bobby Eckstein

Jayne Begala

Leah Cole Durst

Donna Gandt

Maxx Graves

Jay Lieberman

Vanessa McElroy

Steve Pappajohn

Devan Quinn



When we come together, survivors are reminded they are not alone—and that healing, safety, and a brighter future are within reach, made possible by a permanent home for HAVEN.

H:VEN

ENDING VIOLENCE.
CHANGING LIVES.

20 International Drive, Suite 300 Portsmouth, NH 03801

Business Line: 1-603-436-4107

Data was sourced from the following: National Intimate Partner and Sexual Violence Survey (NISVS) conducted by the Centers for Disease Control and Prevention (CDC), RAINN, National Family Violence Survey

Photography by Cheryl Senter unless otherwise noted.

Cover features Lissa Curtis, whose photo and quote can be seen on page 4.